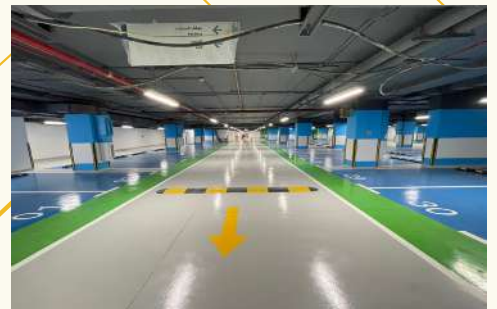
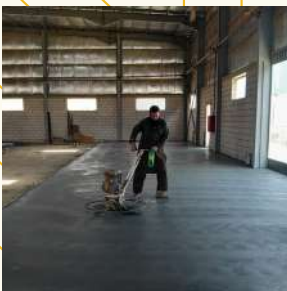
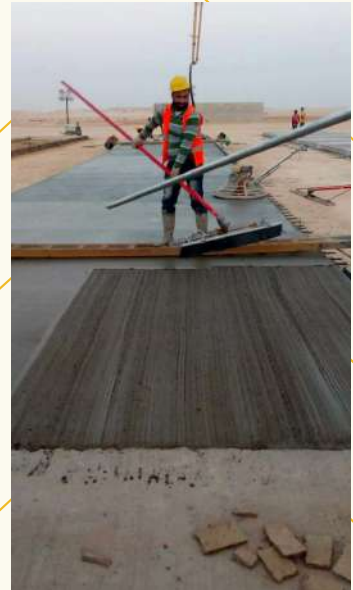
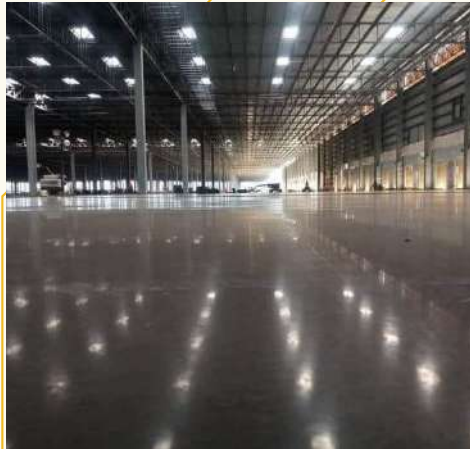


شركة ساهم المتطورة
Sahm Advanced Company



CONTENT

No.	Description	Page
1	About Sahm Advanced Co.	1
2	Our Professional Team Of Experts	3
3	Our Vision, Mission & Values	4
4	ISO 9001: 2015, ISO 14001:2015, ISO:45001 Certificates	5-7
5	Quality, Health, Safety & Environmental Policy	8
6	Our Core Services.	10
7	Concrete Repairs Services	11
8	Structural Crack Repairs & Injection System	15
9	Expansion Joints & Joint Sealants	16
10	Waterproofing Of Tanks, Basements & Roofs	17
11	Polyurea Coating Systems	18
13	Epoxy Flooring & Coating Systems	19
14	Grouting & Micropiles	22
15	Concrete Coring, Cutting & Demolition	23
16	Pavement Preservation & Roadmarking System	25
17	Projects Site Application Pictures	26
18	Passive Firestop Application / Firestop System	-
19	Certificates & Membership	-

About Sahm Advanced Co.

SAHM ADVANCED CO. is a premier general contracting and maintenance company dedicated to delivering specialized construction services that focus on structural integrity, durability, and safety. Established with a vision to provide innovative and reliable solutions, we have steadily grown to become a trusted partner in the construction and maintenance sectors.

Our core expertise lies in concrete repair and restoration, waterproofing, industrial coatings, and structural strengthening. We specialize in repairing critical structural elements such as beams, slabs, columns, and walls, using advanced techniques like crack injection, sealants application, and protective coatings. Our waterproofing solutions extend to water tanks, sewage tanks, and other vital infrastructure, employing state-of-the-art materials including polyurea and epoxy coatings designed to withstand harsh industrial environments.

At **SAHM ADVANCED CO.**, we understand the complexities of modern construction projects, which demand not only technical excellence but also strict adherence to safety and environmental standards. We are proud to hold internationally recognized certifications including:

- **ISO 9001:2015 – Quality Management Systems**, ensuring our processes consistently meet client and regulatory requirements while driving continual improvement.
- **ISO 14001:2015 – Environmental Management Systems**, reflecting our commitment to sustainable practices that minimize environmental impact across all project phases.
- **ISO 45001:2018 – Occupational Health and Safety Management Systems**, underscoring our focus on maintaining a safe and healthy workplace for our employees and partners.

These certifications demonstrate our dedication to excellence, environmental stewardship, and worker safety, setting us apart in a competitive industry.

Our highly skilled team, equipped with modern tools and technologies, enables us to tackle projects ranging from small-scale repairs to large industrial maintenance and infrastructure

rehabilitation. We work closely with clients, consultants, and subcontractors to develop customized solutions that address project-specific challenges efficiently and cost-effectively.

Quality assurance is embedded in every step of our operations — from meticulous material selection and thorough site inspections to post-completion testing and documentation. We continuously invest in training our workforce, adopting new technologies, and refining our processes to stay ahead of industry advancements.

At **SAHM ADVANCED CO.**, our mission is to deliver durable, safe, and environmentally responsible construction services that exceed client expectations. We are committed to building long-term relationships based on trust, transparency, and superior performance.

Our clients and partners include leading corporations and key government institutions throughout the Kingdom of Saudi Arabia and the wider Gulf region. With a strong foundation of experience and technical know-how, we are well-positioned to take on complex challenges and deliver practical, high-quality solutions tailored to local needs.

By combining innovation with a deep understanding of regional priorities, we strive to create meaningful, lasting value—both economically and socially. Our mission is to support sustainable development and shape a better future by consistently delivering projects that meet the highest global standards.



Our Professional Team Of Experts

At **Sahm Advanced Co.**, our strength lies in the expertise, dedication, and professionalism of our team. With a diverse group of highly trained engineers, certified applicators, skilled technicians, and experienced project managers, we bring deep technical knowledge and hands-on capability to every project we undertake. Our professionals are equipped not only with the latest tools and technologies but also with a strong commitment to quality, safety, and long-term performance.

Our team's combined experience spans a wide range of disciplines, allowing us to deliver integrated solutions across sectors including civil construction, industrial maintenance, mechanical systems, protective coatings, and fire protection. We take pride in our ability to approach each project with precision and adaptability—ensuring that the unique requirements of every structure, facility, or client are met with care and technical confidence.

One of our core specialties is concrete repair and structural rehabilitation. Our experts expertly apply advanced techniques such as crack injection using epoxy or polyurethane systems, spalling repair and patching of damaged concrete surfaces, carbon fiber wrapping for structural strengthening, and rebar treatment to protect against corrosion. Additionally, they perform thorough concrete surface preparation and apply protective coatings, handle joint repair and sealant replacement, and carry out concrete slab leveling and resurfacing. These comprehensive capabilities enable us to restore structural integrity, extend service life, and enhance the durability of concrete assets in even the most demanding environments.

Beyond concrete restoration, our professionals are also experienced in installing advanced fire protection systems, applying specialized industrial coatings, and executing complex repair and retrofit works. Collaboration is central to our approach—we work closely with architects, consultants, contractors, and safety inspectors to ensure smooth execution and alignment with project goals.

Every member of the Sahm Advanced Co. team shares a common commitment to excellence. We foster a culture of accountability, continuous learning, and innovation, empowering our people to deliver solutions that not only solve immediate problems but contribute to the long-term resilience and success of the assets we work on. It is this collective expertise and integrity that makes Sahm a trusted partner in every sector we serve.

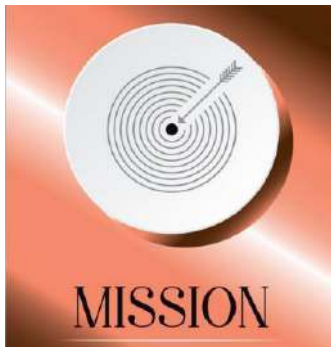
Our Vision, Mission & Values



To be the most trusted name in general contracting and maintenance by delivering high-quality, dependable solutions that enhance the safety, functionality, and longevity of every structure we serve. We strive to set the industry benchmark for safety, reliability, and innovation—on every project, whether large or small.

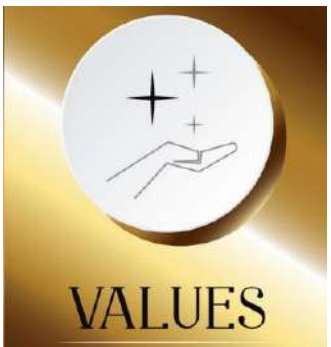
We are driven by purpose.

"Built on Precision. Trusted for Performance."



Our mission is to deliver reliable, high-quality contracting and maintenance solutions that meet safety standards, exceed client expectations, and enhance the longevity and performance of every structure. Through skilled craftsmanship, strict adherence to safety and quality standards, and close collaboration with clients, consultants, and engineers, we ensure every structure meets the highest benchmarks of performance and reliability.

We execute our work with precision, professionalism, and accountability—completing projects on time and with lasting impact. Whether building new infrastructure or extending the life of existing assets, we are committed to delivering excellence that protects investments, enhances functionality, and adds enduring value.



- **Safety First**
We strictly follow fire safety codes to protect people and property.
- **Quality & Precision**
We deliver reliable, code-compliant solutions with expert craftsmanship.
- **Integrity & Accountability**
We do what we say — and own every result.
- **Innovation**
We apply the latest technologies to stay ahead of competition.
- **Client Focus**
We build trust through clear communication and consistent service.

ISO Certification 9001:2015



Certificate of Registration

This is to certify that

SAHM ADVANCED COMPANY

AT

**POSTAL CODE 23453, SAHL IBN RAFI ALKHAZRAJI, AS
SAFA DIST., JEDDAH, KSA**

has been assessed and certified by Vatsin Certification as meeting the requirements of

ISO 9001 : 2015

(Quality Management System)

For the following activities

PROVIDING SERVICES OF CONCRETE REPAIR & STRUCTURAL STRENGTHENING: CRACK REPAIRS, JOINT SEALING, LEAKAGE CONTROL, CATHODIC PROTECTION, HERITAGE RESTORATION, SECTION ENLARGEMENT, CFRP/GFRP WRAPS & LAMINATES, AND POST-TENSIONING SYSTEMS (PTI), EPOXY AND INDUSTRIAL FLOORING SYSTEMS, POLYUREA COATING SYSTEMS. WATERPROOFING FOR ROOFS, BASEMENTS, TANKS, AND WET AREAS. INJECTION GROUTING FOR ACTIVE LEAKAGE SEALING SOIL MITIGATION (PERMEATION GROUTING, COMPACTION GROUTING, UNDERPINNING) FIRE STOPPING AND FIREPROOFING CONCRETE CORING, CUTTING, AND CONTROLLED DEMOLITION PAVEMENT & ROAD MARKING

IAF CODE - 28 & 35

Certificate No : VC23018442

To verify this certificate please visit at www.vatsincertification.com

Date of Initial Registration : 30-09-2025

Revision No. : 00

Re-Certification Due : 29-09-2028

1st Surveillance : 29-09-2026

2nd Surveillance : 29-09-2027

Certificate Expiry : 29-09-2028



MSCB-291



Spinedi
**Authorised
Signatory**

VATSIN CERTIFICATION PRIVATE LIMITED

Accredited by IAS (International Accreditation Services, Inc.)
(3060 Saturn Street, Suite 100, Brea, California 92821 United States of America)

* Validity of the Certificate is subject to successful completion of surveillance audit on or before of due date. (in case Surveillance audit is not allowed to be conducted, this certificate shall be suspended/cancelled)

* Certificate is the Property of VATSIN CERTIFICATION and shall be returned immediately when demanded.

* E-mail : info@vatsincertification.com Website : www.vatsincertification.com

ISO Certification 14001:2015



Certificate of Registration

This is to certify that

SAHM ADVANCED COMPANY

AT

POSTAL CODE 23453, SAHL IBN RAFI ALKHAZRAJI, AS
SAFA DIST., JEDDAH, KSA

has been assessed and certified by Vatsin Certification as meeting the requirements of

ISO 14001 : 2015

(Environmental Management Systems)

For the following activities

PROVIDING SERVICES OF CONCRETE REPAIR & STRUCTURAL STRENGTHENING: CRACK REPAIRS, JOINT SEALING, LEAKAGE CONTROL, CATHODIC PROTECTION, HERITAGE RESTORATION, SECTION ENLARGEMENT, CFRP/GFRP WRAPS & LAMINATES, AND POST-TENSIONING SYSTEMS (PTI). EPOXY AND INDUSTRIAL FLOORING SYSTEMS. POLYUREA COATING SYSTEMS. WATERPROOFING FOR ROOFS, BASEMENTS, TANKS, AND WET AREAS. INJECTION GROUTING FOR ACTIVE LEAKAGE SEALING SOIL MITIGATION (PERMEATION GROUTING, COMPACTION GROUTING, UNDERPINNING) FIRE STOPPING AND FIREPROOFING CONCRETE CORING, CUTTING, AND CONTROLLED DEMOLITION PAVEMENT & ROAD MARKING

IAF CODE - 28 & 35

Certificate No : VC23028425

To verify this certificate please visit at www.vatsincertification.com

Date of Initial Registration : 30-09-2025

Re-Certification Due : 29-09-2028

2nd Surveillance : 29-09-2027

Revision No. : 00

1st Surveillance : 29-09-2026

Certificate Expiry : 29-09-2028



MSCB-291



Signature
Authorised
Signatory

VATSIN CERTIFICATION PRIVATE LIMITED

Accredited by IAS (International Accreditation Services, Inc.)
(3060 Saturn Street, Suite 100, Brea, California 92821 United States of America)

* Validity of the Certificate is subject to successful completion of surveillance audit on or before of due date. (in case Surveillance audit is not allowed to be conducted, this certificate shall be suspended/cancelled)

* Certificate is the Property of VATSIN CERTIFICATION and shall be returned immediately when demanded.

* E-mail : info@vatsincertification.com Website : www.vatsincertification.com

ISO Certification 45001:2018



Certificate of Registration

This is to certify that

SAHM ADVANCED COMPANY

AT

**POSTAL CODE 23453, SAHL IBN RAFI ALKHAZRAJI, AS
SAFA DIST., JEDDAH, KSA**

has been assessed and certified by Vatsin Certification as meeting the requirements of

ISO 45001 : 2018

(Occupational Health & Safety Management System)

For the following activities

PROVIDING SERVICES OF CONCRETE REPAIR & STRUCTURAL STRENGTHENING: CRACK REPAIRS, JOINT SEALING, LEAKAGE CONTROL, CATHODIC PROTECTION, HERITAGE RESTORATION, SECTION ENLARGEMENT, CFRP/GFRP WRAPS & LAMINATES, AND POST-TENSIONING SYSTEMS (PTI). EPOXY AND INDUSTRIAL FLOORING SYSTEMS. POLYUREA COATING SYSTEMS. WATERPROOFING FOR ROOFS, BASEMENTS, TANKS, AND WET AREAS. INJECTION GROUTING FOR ACTIVE LEAKAGE SEALING SOIL MITIGATION (PERMEATION GROUTING, COMPACTION GROUTING, UNDERPINNING) FIRE STOPPING AND FIREPROOFING CONCRETE CORING, CUTTING, AND CONTROLLED DEMOLITION PAVEMENT & ROAD MARKING

IAF CODE - 28 & 35

Certificate No : VC23037219

To verify this certificate please visit at www.vatsincertification.com

Date of Initial Registration : 30-09-2025

Re-Certification Due : 29-09-2028

2nd Surveillance : 29-09-2027

Revision No. : 00

1st Surveillance : 29-09-2026

Certificate Expiry : 29-09-2028



MSCB-291



Spinedi
**Authorised
Signatory**

VATSIN CERTIFICATION PRIVATE LIMITED

Accredited by IAS (International Accreditation Services, Inc.)
(3060 Saturn Street, Suite 100, Brea, California 92821 United States of America)

* Validity of the Certificate is subject to successful completion of surveillance audit on or before of due date. (in case Surveillance audit is not allowed to be conducted, this certificate shall be suspended/cancelled)

* Certificate is the Property of VATSIN CERTIFICATION and shall be returned immediately when demanded.

* E-mail : info@vatsincertification.com Website : www.vatsincertification.com

Quality, Health, Safety & Environment Policy

At **Sahm Advanced Co.**, we are fully committed to delivering excellence in **Quality, Health, Safety, and Environmental (QHSE)** performance across all our operations. As a certified company under **ISO 9001:2015 (Quality Management)**, **ISO 14001:2015 (Environmental Management)**, and **ISO 45001:2018 (Occupational Health & Safety Management)**, we align our practices with internationally recognized standards to ensure consistency, safety, sustainability, and client satisfaction.

Our mission is to ensure that every service we deliver — from general contracting to specialized firestopping solutions — meets the highest industry standards, complies with regulatory requirements, and supports continuous improvement.

We recognize that our long-term success is built on our ability to:

- Deliver consistent, **high-quality, reliable general contracting and maintenance solutions**
- Protect the **health and safety** of our employees, partners, and the public
- Minimize our **environmental footprint**
- Promote a culture of **continuous improvement and compliance**

Our Commitments:

1. Quality

- Provide technically sound, code-compliant, and high-quality construction and maintenance services.
- Ensure that all products and services meet or exceed client specifications and regulatory standards.
- Continuously improve our processes through feedback, audits, and performance evaluation.

2. Health & Safety

- Maintain a safe and injury-free workplace through proactive risk assessments and control measures.
- Comply with all applicable local and international health and safety regulations (e.g., OSHA, NFPA).

- Provide training and resources to ensure every employee understands and practices safe work behavior.

3. **Environmental Protection**

- Reduce waste, emissions, and environmental harm during all project phases.
- Promote efficient use of resources and environmentally responsible disposal of firestop materials.
- Comply with all relevant environmental legislation and standards.

4. **Leadership and Responsibility**

- Empower our managers and supervisors to lead by example and take accountability for QHSE performance.
- Involve all employees in maintaining a culture of safety, quality, and environmental responsibility.

5. **Continuous Improvement**

- Monitor QHSE performance through regular inspections, internal audits, and performance reviews.
- Take corrective and preventive actions to address risks, non-conformities, and opportunities for improvement.

This policy reflects the core values of **Sahm Advanced Co.**, and is actively communicated to all employees, subcontractors, and stakeholders. We are committed to reviewing this policy regularly and adapting our practices to uphold the highest standards in every project we undertake.



Our Core Services:

Comprehensive Maintenance & Contracting Solutions

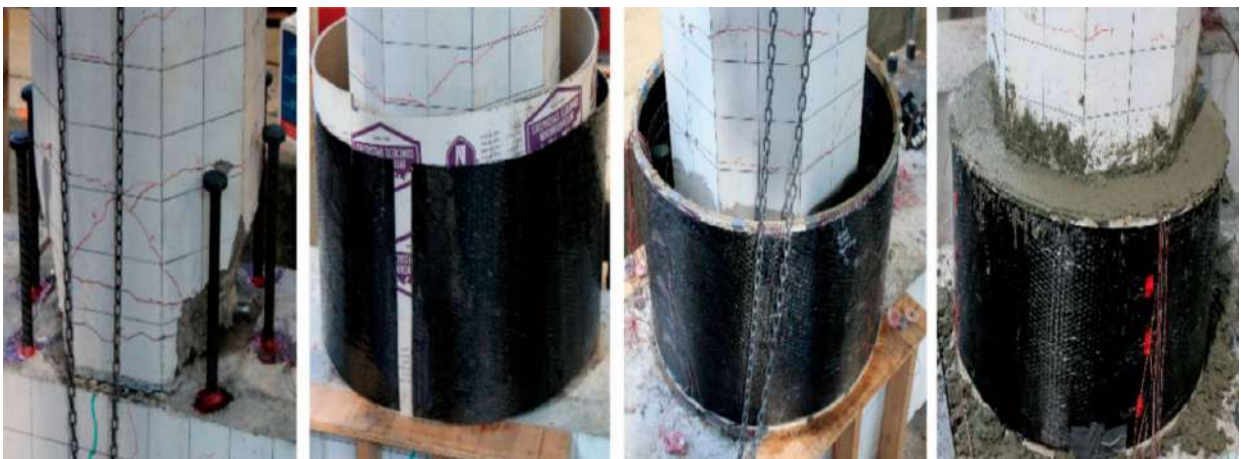
- **Concrete Repairs (Beams, Slabs, Columns, etc.)**
- **Structural Crack Repair & Injection**
- **Expansion Joint Sealant Work**
- **Waterproofing (Tanks, Basements, Roofs)**
- **Polyurea & Epoxy Coating Systems**
- **Industrial Coatings for Warehouses & Factories**
- **Application of Firestop and Fireproofing Systems**
- **Grouting and Micro-piles Installation**
- **Concrete Coring, Cutting, and Demolition**
- **Pavement Preservation & Road Marking.**

Concrete Repairs Services:

At Sahm Advanced Co., we offer specialized concrete repair solutions to restore the integrity, durability, and appearance of structural elements such as beams, slabs, columns, foundations, and walls. Our team is equipped with the technical expertise and resources to assess structural damage, determine root causes, and implement effective repair strategies that meet industry standards and project specifications.

We handle a wide range of concrete deterioration issues, including cracking, spalling, honeycombing, reinforcement corrosion, and structural weakening due to environmental exposure or loading stress. Using high-performance repair materials, such as polymer-modified mortars, epoxy resins, and corrosion inhibitors, we ensure long-term performance and protection of the repaired areas.

All repair works are executed in line with international standards (e.g., ACI, ASTM, BS EN) and under strict QHSE protocols, ensuring safety, quality, and minimal disruption to ongoing operations. Whether part of a refurbishment project or emergency structural repair, Sahm Advanced Co. delivers reliable, cost-effective concrete rehabilitation tailored to each client's needs.



Repair procedure with CFRP shell and concrete: (a) Post-installed headed bars; (b) Split CFRP shell; (c) CFRP shell around column; (d) CFRP shell filled with non-shrink or expansive concrete



Before Repair Of Column



After Repair Of Column





Repair of Concrete Slab





Structural Crack Repairs & Injection

Structural Crack Repair & Injection involves the restoration of structural integrity in concrete elements by sealing and stabilizing cracks through pressure injection techniques. Using materials like epoxy or polyurethane, this method effectively fills voids and bonds cracked sections, preventing water ingress, corrosion, and further deterioration.

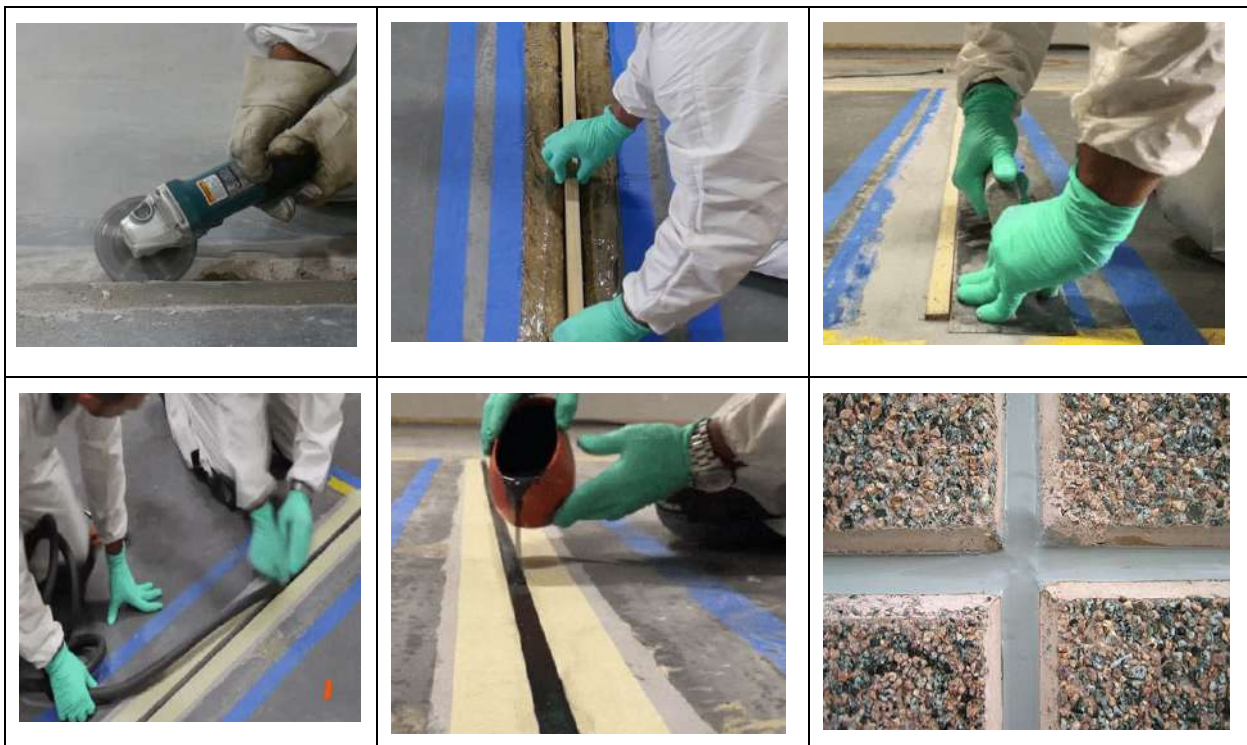
This process is essential in maintaining the longevity and safety of buildings, bridges, and other concrete structures. Expertise in crack injection requires a deep understanding of crack patterns, causes, and appropriate repair materials, ensuring durable and reliable restoration that meets industry standards.



Expansion Joints & Sealants Works

Expansion Joints and Sealant Works are critical in maintaining the durability and performance of structures by accommodating movement caused by temperature changes, vibration, and structural settling. Proper installation of expansion joints prevents cracking and structural damage by allowing controlled movement, especially in large concrete surfaces, bridges, and façades.

Sealant application complements this by providing a weather-tight and flexible barrier against moisture, dust, and debris infiltration. Expertise in selecting the right type of sealant—whether silicone, polyurethane, or polysulfide—ensures long-lasting protection, minimal maintenance, and compliance with industry standards. These systems are essential in both new construction and refurbishment projects to preserve structural integrity and appearance.



Waterproofing of Tanks, Basements, Roofs

Waterproofing (Potable Water Tanks, Basements & Roofs) is a vital aspect of construction and structural protection, aimed at preventing water ingress that can cause deterioration, mold growth, and structural failures. Effective waterproofing ensures the long-term durability of buildings by creating a barrier against moisture in critical areas such as underground basements, potable water tanks, and exposed roofs.

This work involves the use of advanced materials and techniques, including liquid membranes, bituminous coatings, cementitious systems, and polyurethane-based solutions, tailored to suit different structural needs. A well-executed waterproofing system not only enhances the life span of the structure but also ensures safety, comfort, and reduced maintenance costs over time.



Polyurea Coating Systems

Polyurea Coating Systems are high-performance protective solutions used to enhance the durability, chemical resistance, and waterproofing of concrete and steel surfaces. These coatings are ideal for demanding environments such as industrial floors, water tanks, parking decks, and secondary containment areas, offering rapid curing times, seamless finishes, and long-lasting protection. Polyurea provides exceptional flexibility, abrasion resistance, and fast return-to-service, making it suitable for heavy-duty applications. Available in both hot-applied and cold-applied formulations, polyurea offers versatility to suit a wide range of application requirements and environmental conditions

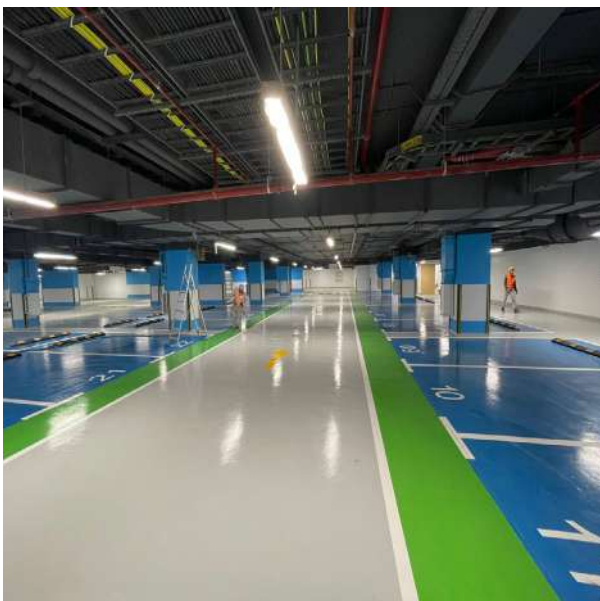
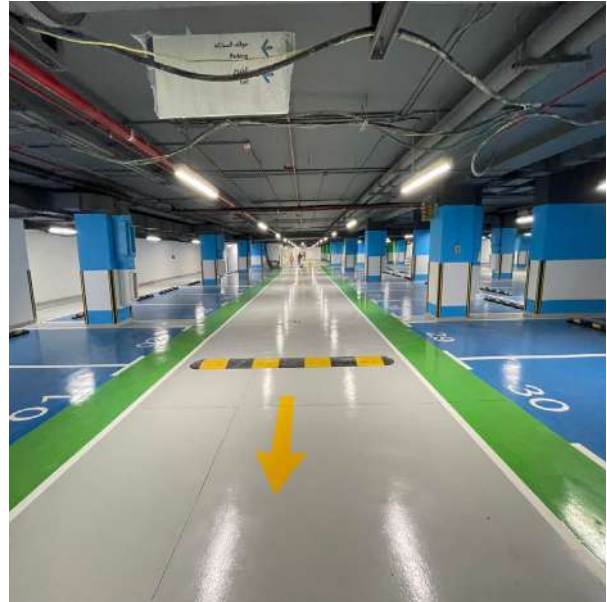
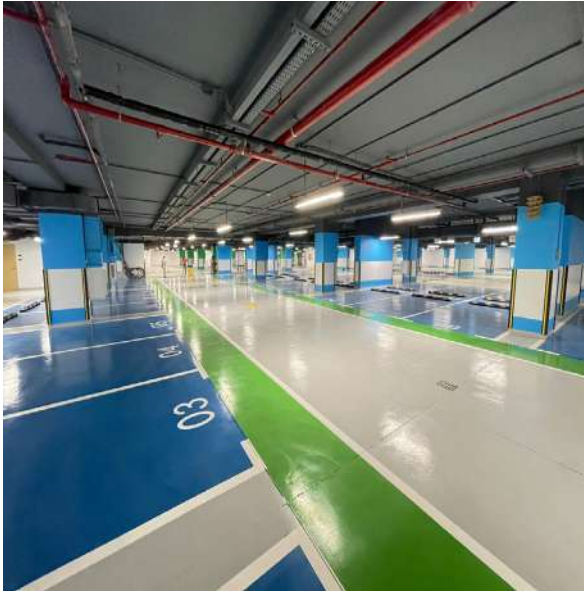
In addition polyurea superior ability to withstand structural movement without cracking makes it a reliable solution for both new construction and rehabilitation projects. It adheres to a wide range of substrates including concrete, steel, and geotextiles. When applied by qualified professionals, polyurea coating systems provide long-lasting protection, extending the service life of critical infrastructure in the most demanding environments.



Application of Polyurea Coating

Epoxy Flooring & Coating System

Epoxy Flooring & Coatings : As part of our comprehensive construction and finishing solutions, we offer high-performance epoxy flooring and coating systems suitable for a wide range of industrial, commercial, and institutional applications. These systems provide seamless, durable, and low-maintenance surfaces that resist heavy traffic, chemicals, and abrasion. Commonly used in warehouses, production facilities, hospital ls, and cleanrooms, our epoxy solutions enhance both functionality and aesthetics, contributing to safe and efficient work environments.



Chemical-Resistant and Anti-Corrosion Coatings : We provide specialized coating solutions designed to protect critical infrastructure from chemical exposure and corrosion. Our chemical-resistant and anti-corrosion systems are engineered for use in highly demanding sectors such as oil & gas, wastewater treatment, chemical processing, and marine environments. Applied to both concrete and steel substrates, these coatings ensure long-term protection, reduce maintenance needs, and extend the service life of essential structures.



UV-Resistant Topcoats : For exterior and exposed surfaces, we offer UV-resistant topcoats that safeguard against environmental degradation and ultraviolet radiation. These advanced coatings maintain color stability and surface integrity over time, making them ideal for rooftops, façades, equipment enclosures, and open parking structures. When used as a protective finish over epoxy, polyurethane, or polyurea systems, our UV topcoats deliver superior weather resistance and long-term durability in harsh outdoor conditions.



Grouting & Micropiles System

Grouting & Micropiles: As a full-service general contracting company, we offer specialized ground improvement solutions, including pressure grouting and micropile installation, to enhance soil stability and structural integrity. Our grouting services—such as permeation, compaction, and chemical grouting—are used to fill voids, reduce water ingress, and strengthen foundations in both new construction and rehabilitation projects. These techniques are critical in addressing settlement issues, improving load-bearing capacity, and preparing challenging soil conditions for safe and stable construction.

Micropiles are high-capacity, small-diameter deep foundation elements used where conventional piling is impractical due to limited access, difficult ground conditions, or sensitive structures. Our team designs and installs micropile systems to support new foundations, underpin existing structures, and resist axial and lateral loads. With expertise in geotechnical engineering and advanced drilling methods, we ensure precise installation and optimal performance of micropiles in a wide range of applications, including infrastructure, commercial buildings, bridges, and industrial facilities.



Concrete Coring, Cutting & Demolition

Concrete Coring, Cutting, and Controlled Demolition: As part of our specialized contracting services, we offer advanced concrete coring, cutting, and controlled demolition solutions to support a wide range of structural and renovation projects. Using precision diamond tools and state-of-the-art equipment, our team carries out core drilling, wall and floor sawing, wire cutting, and selective demolition with minimal noise, vibration, and dust. These methods are essential for creating accurate openings for mechanical, electrical, and plumbing installations, as well as for structural modifications in existing buildings.

Our controlled demolition services are carefully planned and executed to ensure the safe and efficient removal of concrete elements without compromising adjacent structures. Whether dismantling slabs, beams, walls, or foundations, we apply engineered techniques tailored to each site's specific requirements—especially in sensitive environments such as operational facilities, urban developments, and confined spaces. With a strong focus on safety, precision, and environmental responsibility, we deliver reliable solutions that meet the highest industry standards and project timelines.



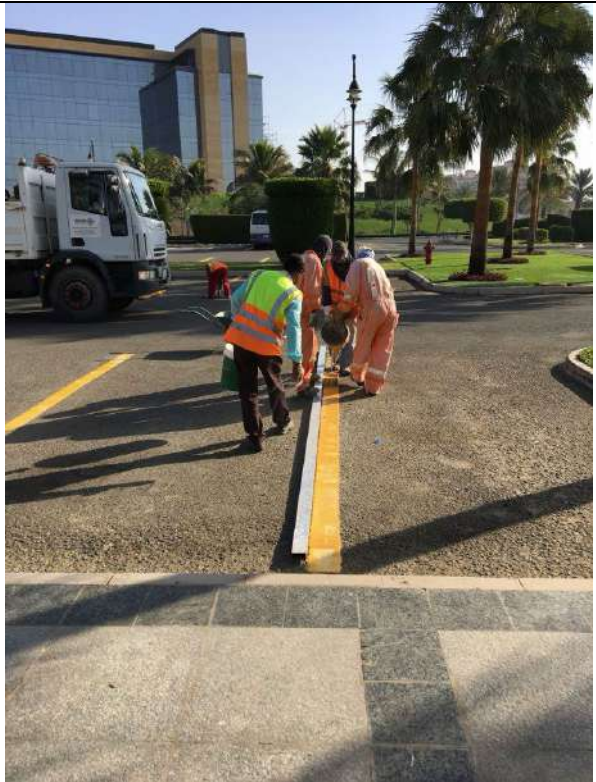


Pavement Preservation & Road Markings

At **Sahm Advanced Co.**, we specialize in pavement preservation services that extend the life of roadways and protect infrastructure investments. Our team employs proven techniques such as routing, crack sealing, seal coating, and surface treatments to maintain road integrity and enhance performance. By using high-quality materials and state-of-the-art equipment, we help municipalities, private developers, and commercial clients reduce long-term maintenance costs and improve safety across their transportation networks.

In addition to preservation, we provide comprehensive road marking solutions designed for durability, visibility, and compliance with safety standards. From highways and intersections to parking lots and custom traffic layouts, our skilled crews deliver precise, long-lasting striping and signage using reflective and weather-resistant materials. With a focus on efficiency, quality control, and minimal traffic disruption Sahm Advanced Co is a trusted partner in building and maintaining safer, more reliable roads.





Project Sites Application Pictures

PROJECTS APPLICATION PICTURES

Helipad Coating and Marking – Makkah Hotel

Helipad coating and marking work involve applying durable, non-slip surface coatings designed to withstand rotor wash, weather conditions, and heavy loads. The coating provides a smooth, high-visibility landing area, ensuring safety and reliability. Reflective, aviation-grade markings clearly define the touchdown zone, “H” symbol, and perimeter, ensuring compliance with aviation standards and enhancing operational safety for the Makkah Hotel helipad.



Structural Modification Work – French Consulate Jeddah





Makkah Tunnel Repair& Coating Project



Al Zamil Factory Self levelling coating



Passive Fire Protection System

At **Sahm Advanced Co.**, we offer a full spectrum of passive fire protection services designed to preserve life safety, protect assets, and ensure full compliance with international and local fire safety standards. Our capabilities cover both new construction and retrofit projects across commercial, industrial, healthcare, and infrastructure sectors.

Firestop Installation

We work across a wide range of structures and environments, from high-rise buildings and commercial facilities to healthcare, oil & gas, and industrial installations. Our installation services cover complex and high-risk areas, with full attention to **manufacturer specifications and tested system designs**.

Our firestop installation scope includes:

- **Wall-to-wall, floor-to-floor, and wall-to-floor joints**
Installation of flexible and rigid firestop systems for movement and static joints, preserving the fire rating across horizontal and vertical separations.
- **Head-of-wall and perimeter joints (including curtain wall interfaces)**
Expert sealing of slab edge and head-of-wall assemblies using tested systems to protect against vertical fire spread—critical for high-rise and curtain wall buildings.
- **Penetration sealing for mechanical, electrical, and plumbing systems (MEP)**
Sealing through-penetrations such as pipes, ducts, and conduit bundles with firestop collars, wraps, and sealants tailored to the material type and penetration size.
- **Firestopping for cable trays, conduits, ducts, and pipework**
Application of tested firestop systems around grouped services and high-density cabling, ensuring continuity of fire barriers while allowing for future maintenance access.

Every firestop system we install is selected based on:

- **UL design requirements**
- **Building fire resistance ratings**
- **Compatibility with adjacent construction materials**

- **Thermal, acoustic, and movement performance needs**

We ensure **zero compromise on safety, durability, or compliance**, and provide full documentation, as-built drawings, and quality assurance records for inspection and certification purposes.

Retrofitting and Upgrades

We assess and upgrade existing firestop installations to meet current codes and performance requirements. Services include removal of non-compliant systems, reinstallation, and restoration of effective compartmentation.

Structural Fire Protection for Steel and Wood

We apply specialized fire-retardant systems to enhance the fire resistance of structural elements:

- **Intumescent paints** for steel structures to delay heat transfer and preserve load-bearing capacity during fire exposure
- **Fire-retardant impregnating agents** and **varnishes** for wood surfaces to reduce combustibility and ignition risk

These systems are tested and certified for use in exposed and concealed environments, and comply with relevant fire protection standards.

Inspection and Compliance Documentation

We provide comprehensive documentation to support regulatory and third-party inspection, including:

- UL system references and installation details
- Product certifications and fire test results
- As-built drawings, inspection checklists, and QA/QC records

Supply of Certified Firestop Materials

We supply and apply premium firestop products sourced from globally recognized manufacturers, including Hilti, 3M, PFPP, Fischer, Promat, Retroseal, and Nullifire. All materials are UL-listed and selected based on performance, durability, and compatibility.

Compartmentation and Barrier Restoration

We repair and restore fire-rated walls, floors, and ceilings that have been compromised during construction, renovation, or maintenance activities, ensuring containment of fire and smoke in accordance with code requirements.

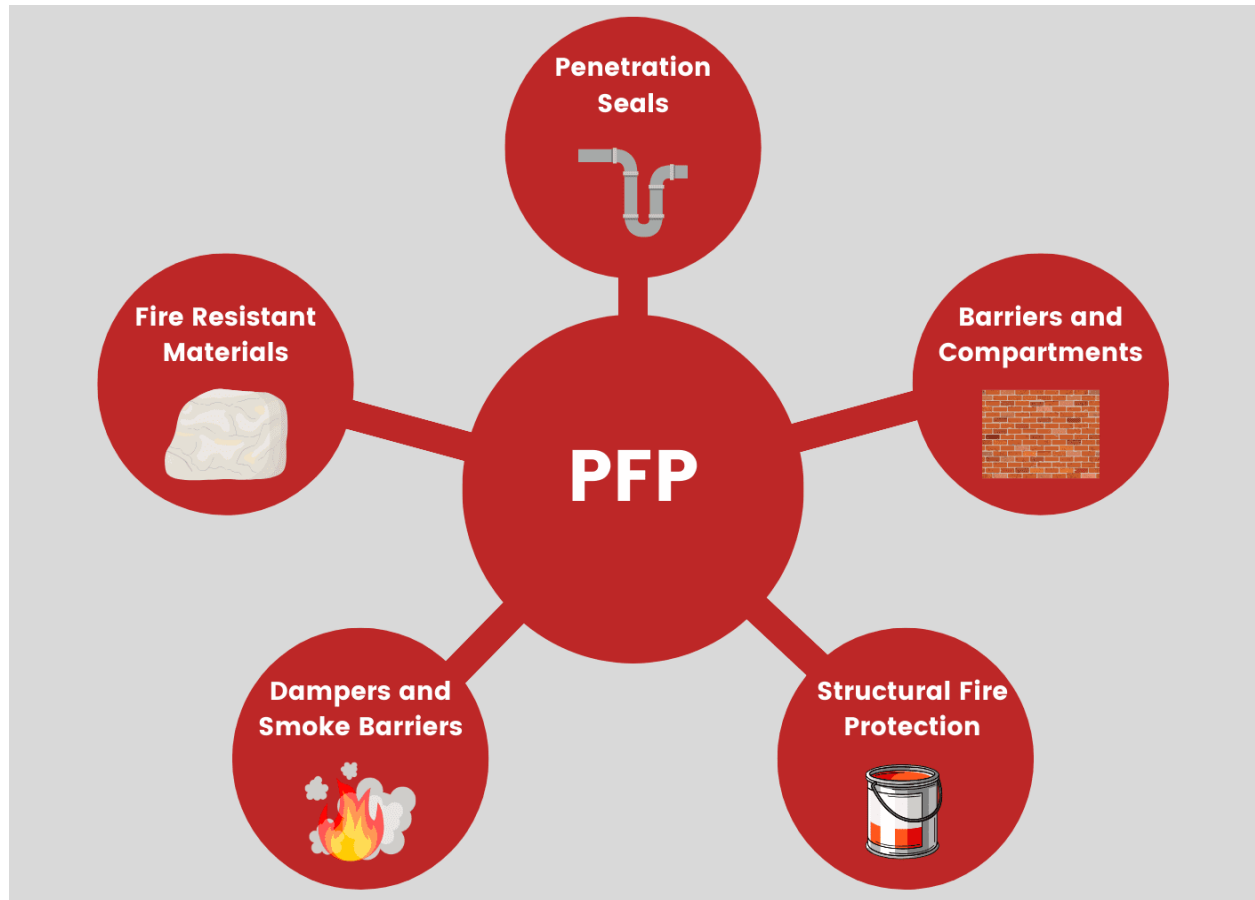
Third-Party Testing and Compliance Support

We collaborate with accredited third-party agencies to verify system performance and support project handover. Our services include compliance checks, on-site inspections, and preparation of required documentation for civil defense and regulatory authorities.

On-Site Training and Firestop Awareness (Optional)

We offer basic firestop awareness sessions for construction and facility teams to ensure best practices are followed during the project lifecycle and to minimize risks of system breaches or non-compliance.

Project Sites Application Pictures





Installation of Rockwool



Edge Of Slab Joint Spray for Non-rated Joint System



Top Of Wall Joint – Sealant Application



Bottom Of Wall Joint – Sealant Application



Linear Joint – Sealant Application



Joint – Sealant Application



Pipe Thru-Penetration - Intumescent Sealant Application



Membrane Penetration- Intumescent Sealant Application



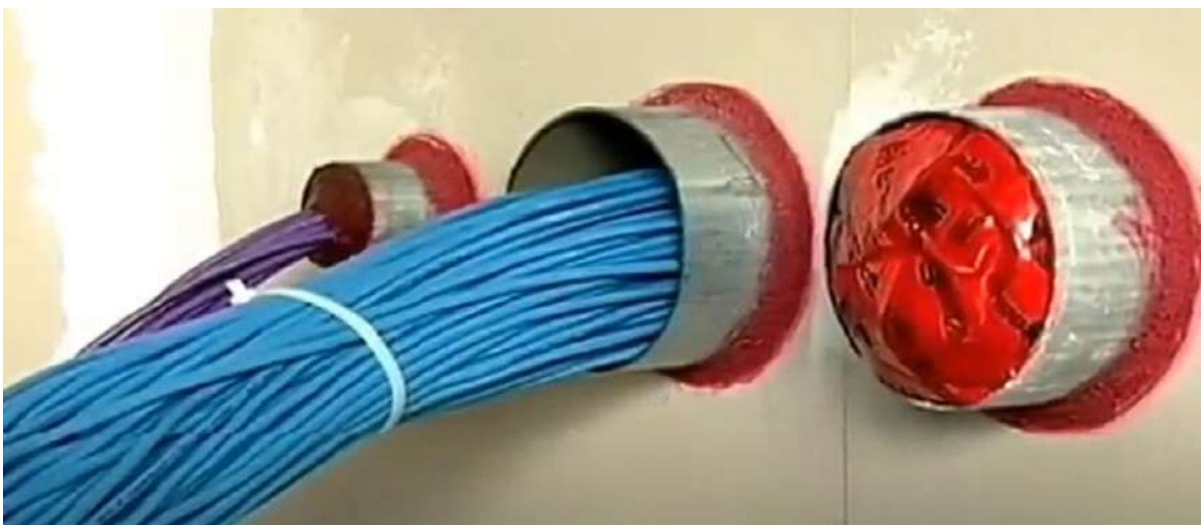
Pipe Thru-Penetration – Intumescent Firestop Collar



Pipe Thru-Penetration – Intumescent Firestop Collars



Multiple Penetration - Intumescent Sealant Application



Thru-Penetration- Intumescent Sealant Application



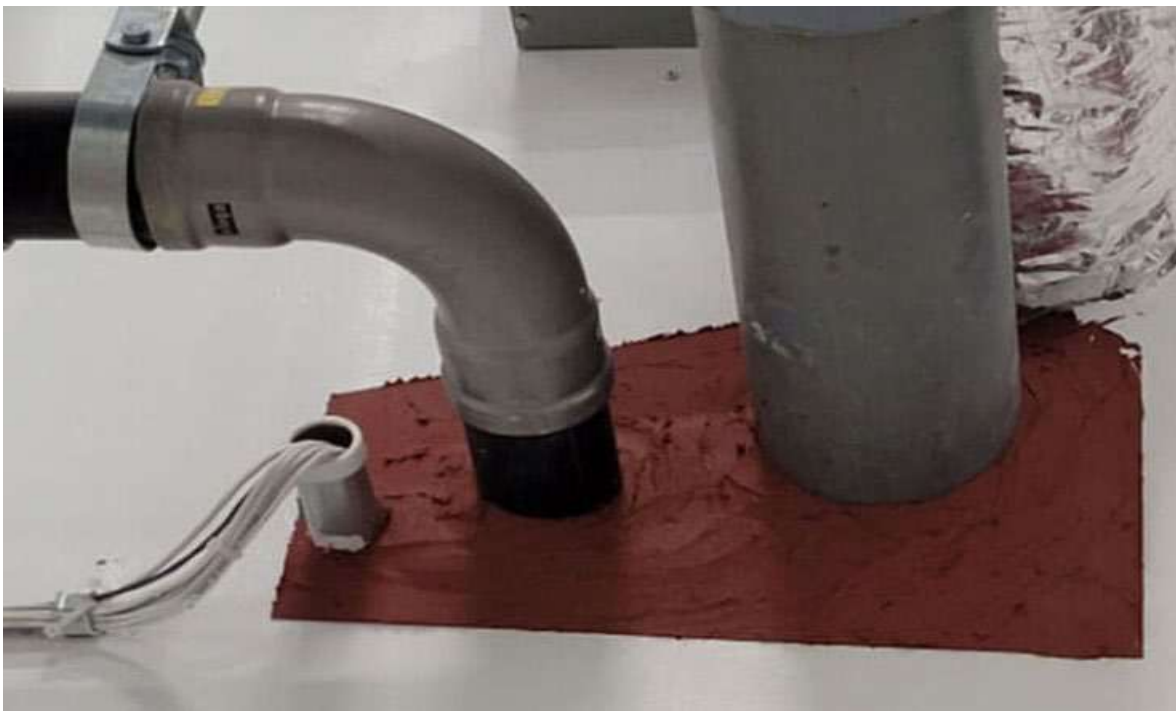
Multiple Penetration - Sealant Application



Multiple Penetration - Sealant Application



MEP Penetrations – Firestop Mortar



MEP Penetrations Mortar



Cable Tray Penetration



Cable Tray Penetration



HVAC Ducts – Firestop Sealant



HVAC Ducts – Firestop Sealant



Firestop Mortar for Large Openings



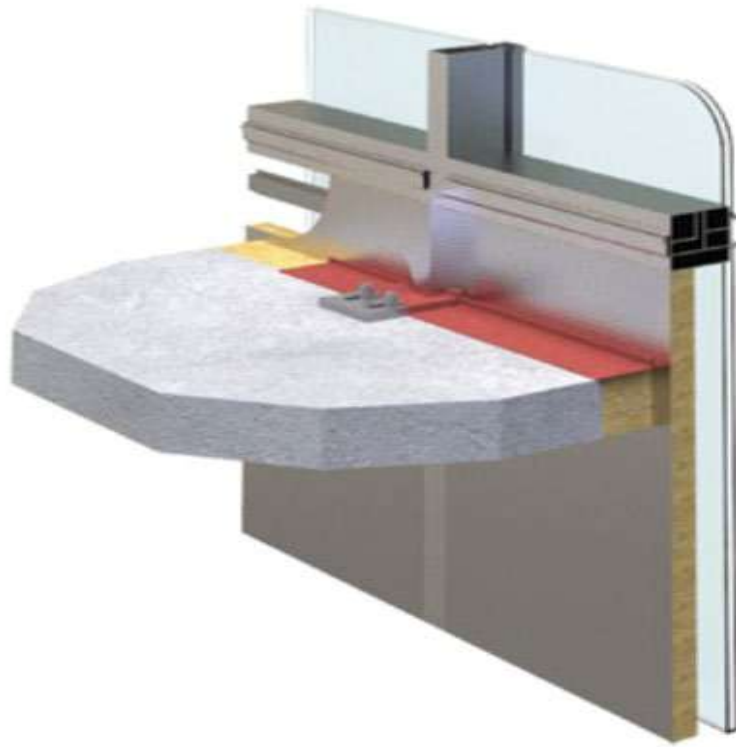
Firestop Mortar for Large Openings



Firestop Bricks for Large Openings



Firestop Pillows for Large Openings



Perimeter Fire Barrier : A gap, joint, or opening, whether static or dynamic, between a fire-rated floor assembly and a non-rated exterior wall assembly.





Intumescent Firestop Coating for Steel Structures



Intumescent Firestop Coating for Steel Beams and Columns



Fire Retardant Varnishes for Wood



Fire Retardant Varnishes for Wood

Certificates & Memberships



constructive solutions

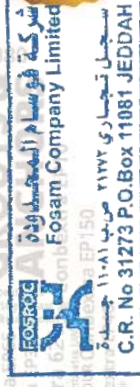
CERTIFICATE - APPROVED APPLICATOR

We, FOSAM COMPANY LIMITED (Saudi Fosroc), certify that

SAHM ADVANCED COMPANY

*achieved a satisfactory level of experience in applying Fosroc products
in the field of Industrial Flooring, Protective Coating & Sealant*

*This certificate has been issued on the 18th of May 2025, upon request and is valid for six months.
Fosam Company Limited will not bear any responsibility due to misuse of application and has the right to cancel
this certification at any time due to low performance or violation of technical instructions either mentioned
in the technical data sheet or given by Fosam's representative at site.*



Ayman Elwali

Technical and Specification Manager - Fosam Company Limited

CERTIFICATE OF COMPLETION

This is to confirm that **SAHM ADVANCED COMPANY** has successfully completed our,

APPLICATOR TRAINING COURSE

Covering the following topics

Health and Safety, DELTA Coatings Polyurea products, Substrate Preparation, Primers and Priming, Pre-Spray Inspections and Tests, Projects Surveys and Daily Quality Assurance Documentation.



Signed.....
DELTA Coatings Trainer



Signed
DELTA General Manager

27/09/2025

Date



Passive Fire Protection Partners

Date: May 20, 2025

TO WHOM IT MAY CONCERN:

THIS LETTER VERIFIES THAT SAHM ADVANCED COMPANY IS AN APPROVED
APPLICATOR OF PASSIVE FIRE PROTECTION PARTNERS FIRESTOP MATERIALS.

IF ANY ADDITIONAL INFORMATION IS REQUIRED, OR IF YOG HAVE
ANY FURTHER QUESTIONS REGARDING THE ABOVE INFORMATION.
PLEASE DO NOT HESITATE TO CONTACT US

Sincerely,

George Rouhana
Executive Director

PFP Partners
1412 Derwent Way
Annacis Industrial Park
Delta, BC Canada V3M 6H9
Phone : 604-515-1788
Fax : 604-515-1783
firestop.com



CamScanner

